


APPLICATION		REVISION				
NEXT ASSY	USED ON	REV	ECO	DESCRIPTION	DATE	BY
	M800	A	51486	RELEASE TO PRODUCTION	11/08/04	NLS



UNLESS OTHERWISE SPECIFIED DIMENSIONS ARE IN INCHES	SPECIFICATION CONTROL DRAWING DO NOT SCALE DRAWING		 <i>Sypris Data Systems</i> <i>San Dimas, California</i>	
TOLERANCES	SIGNATURE		DATE	
ANGULAR -----	Drawn:	NL SARKISIAN	11/08/04	
DECIMAL 2 PL -----	Check:			
DECIMAL 3 PL -----	Design:			
MATERIAL	Approval:			
NOTED			SIZE	CAGE CODE
			A	14028
			DWG NO.	REV
			642245	A
			SCALE: ----	SHEET 1 of 5

-0xxx SHOWN

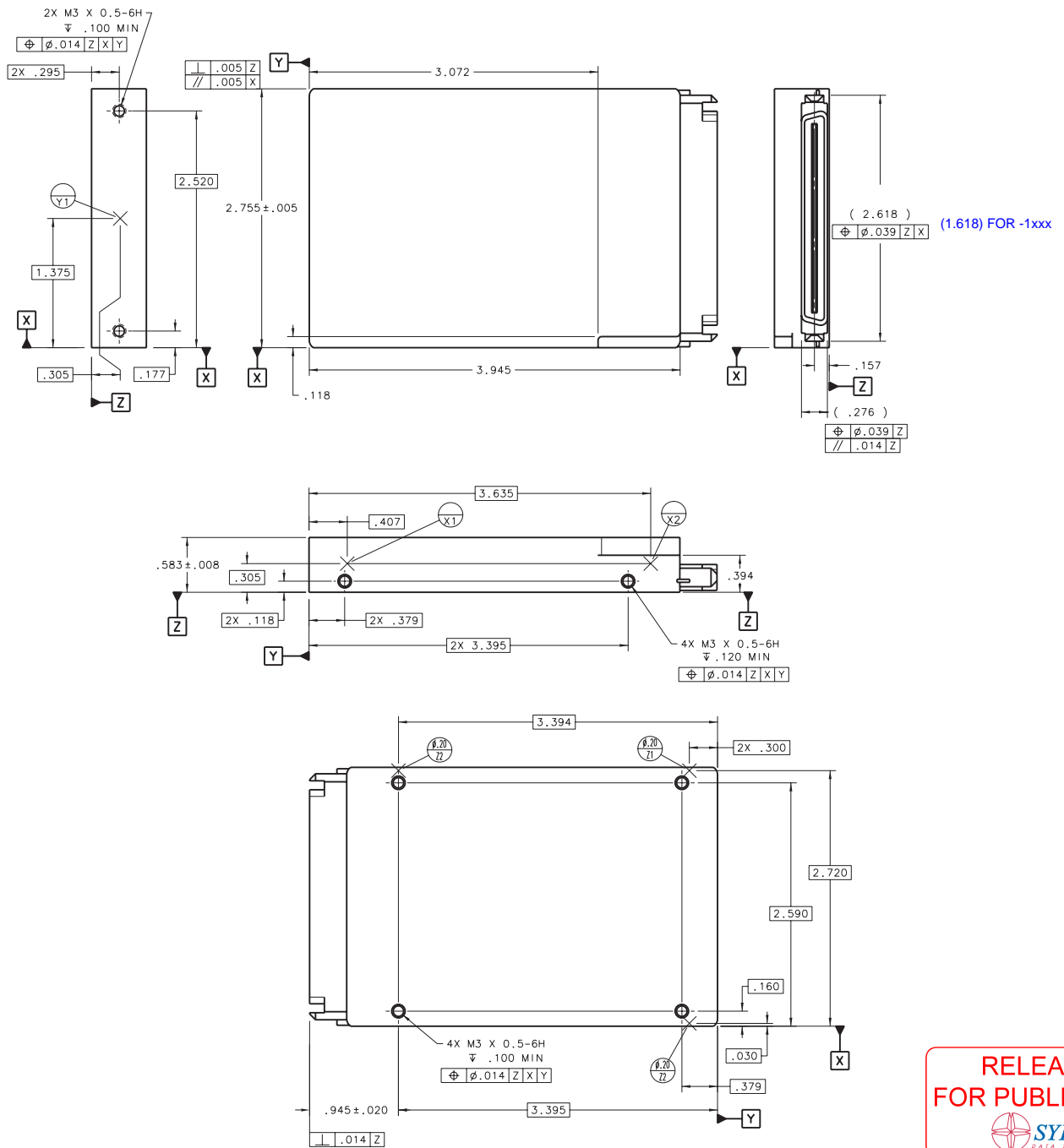


Figure 1 Mounting configuration dimensions

RELEASED
 FOR PUBLICATION

642245 REV A
 SHEET 2

TECHNICAL SPECIFICATIONS:	-0037	-0073	-1037	-1073
Description				
Model Number	ST936701LC	ST973401LC	ST936701FC	ST973401FC
Model Name	Savvio	Savvio	Savvio	Savvio
Form Factor(width)	2.5-inch	2.5-inch	2.5-inch	2.5-inch
Form Factor(height)	15 mm	15 mm	15 mm	15 mm
Physical Specifications				
Height	15 mm	15 mm	15 mm	15 mm
Width	70.1 mm	70.1 mm	70.1 mm	70.1 mm
Length	111.7 mm	111.7 mm	111.7 mm	111.7 mm
Weight	0.5 kg	0.5 kg	0.5 kg	0.5 kg
Capacity/Interface				
Formatted Capacity	36.7 Gbytes	73.4 Gbytes	36.7 Gbytes	73.4 Gbytes
Interface Type	80-pin SCA	80-pin SCA	40-pin SCA	40-pin SCA
Performance				
Transfer Rates				
Internal Transfer Rate (min)	497 Mbits/sec	497 Mbits/sec	497 Mbits/sec	497 Mbits/sec
Internal Transfer Rate (max)	752 Mbits/sec	752 Mbits/sec	752 Mbits/sec	752 Mbits/sec
Formatted Int Transfer Rate (min)	62 MBytes/sec	62 MBytes/sec	62 MBytes/sec	62 MBytes/sec
Formatted Int Transfer Rate (max)	94 MBytes/sec	94 MBytes/sec	94 MBytes/sec	94 MBytes/sec
External (I/O) Transfer Rate (max)	320 MBytes/sec	320 MBytes/sec	200 MBytes/sec	200 MBytes/sec
Avg Formatted Transfer Rate	52 MBytes/sec	52 MBytes/sec	52 MBytes/sec	52 MBytes/sec
Seek Times				
Average Seek Time, Read	4.1 msec typ	4.1 msec typ	4.1 msec typ	4.1 msec typ
Average Seek Time, Write	4.5 msec typ	4.5 msec typ	4.5 msec typ	4.5 msec typ
Track-to-Track Seek, Read	0.4 msec typ	0.4 msec typ	0.4 msec typ	0.4 msec typ
Track-to-Track Seek, Write	0.7 msec typ	0.7 msec typ	0.7 msec typ	0.7 msec typ
Average Latency	3 msec	3 msec	3 msec	3 msec
Other				
Default Buffer (cache) Size	8,000 Kbytes	8,000 Kbytes	8,000 Kbytes	8,000 Kbytes
Spindle Speed	10000 RPM	10000 RPM	10000 RPM	10000 RPM
Spinup Time	20 sec	20 sec	20 sec	20 sec
Power-on to Ready Time	20 sec	20 sec	20 sec	20 sec
Configuration				
Number of Discs (physical)	1	2	1	2
Number of Heads (physical)	2	4	2	4
Total Cylinders	51,052	51,052	51,052	51,052
Total Tracks	102,104	204,208	102,104	204,208
Track Density (TPI)	105 tracks/in	105 tracks/in	105 tracks/in	105 tracks/in
Bytes/Track (avg)	360,000	360,000	360,000	360,000
Recording Components				
Electrical Requirements				
Current				
Typical Current (12VDC +/- N/A%)	0.32 amps	0.34 amps	0.32 amps	0.34 amps
Typical Current (5VDC +/- N/A%)	0.81 amps	0.81 amps	0.95 amps	0.95 amps
Startup Current (5VDC +/- N/A%)	2.3 amps	2.3 amps	2.3 amps	2.3 amps
Power				
Idle Power (typ)	4.8 watts	5.1 watts	6.5 watts	6.8 watts



SIZE	CAGE CODE	DWG NO.	REV
A	14028	642245	A
			SHEET 3

Environmental Specifications				
Shock and Vibration				
Max Operating Shock (2-msec)	60 Gs	60 Gs	60 Gs	60 Gs
Max Nonoperating Shock (2-msec)	275 Gs	275 Gs	275 Gs	275 Gs
Operating Vibration (max)	0.5 Gs	0.5 Gs	0.5 Gs	0.5 Gs
Nonoperating Vibration (max)	1.2 Gs	1.2 Gs	1.2 Gs	1.2 Gs
Temperature and Humidity				
Operating Temperature (max)	55 deg C	55 deg C	55 deg C	55 deg C
Operating Temperature (min)	5 deg C	5 deg C	5 deg C	5 deg C
Nonoperating Temperature (max)	70 deg C	70 deg C	70 deg C	70 deg C
Nonoperating Temperature (min)	-40 deg C	-40 deg C	-40 deg C	-40 deg C
Operating Temperature Change (max)	20 deg C/hr	20 deg C/hr	20 deg C/hr	20 deg C/hr
Nonoperating Temperature Change (max)	20 deg C/hr	20 deg C/hr	20 deg C/hr	20 deg C/hr
Operating Humidity (max)	95 percent	95 percent	95 percent	95 percent
Nonoperating Humidity (max)	95 percent	95 percent	95 percent	95 percent
Operating Humidity Change (max)	20 % per hour	20 % per hour	20 % per hour	20 % per hour
Altitude				
Operating Altitude (max)	3,048 m	3,048 m	3,048 m	3,048 m
Operating Altitude (min)	-305 m	-305 m	-305 m	-305 m
Nonoperating Altitude (max)	12,210 m	12,210 m	12,210 m	12,210 m
Nonoperating Altitude (min)	-305 m	-305 m	-305 m	-305 m
Acoustics				
Acoustics, Idle (sound power, typ)	2.4 Bels	2.6 Bels	2.4 Bels	2.6 Bels
Reliability				
MTBF (Hours)	1,400,000 hrs	1,400,000 hrs	1,400,000 hrs	1,400,000 hrs
Nonrecoverable Read Errors	1 PER 10 ¹⁵ bits read	1 PER 10 ¹⁵ bits read	1 PER 10 ¹⁵ bits read	1 PER 10 ¹⁵ bits read
Supports S.M.A.R.T.	Yes	Yes	Yes	Yes
Service Life	5 year(s)	5 year(s)	5 year(s)	5 year(s)
Limited Warranty Period	5 year(s)	5 year(s)	5 year(s)	5 year(s)



SIZE	CAGE CODE	DWG NO.	REV
A	14028	642245	A
			SHEET 4

DASH NUMBER	MANUFACTURER PART NUMBER	MANUFACTURER NAME AND ADDRESS	CAGE CODE
-0037	ST936701LC	SEAGATE TECHNOLOGY	65867
-0073	ST973401LC	920 DISC DR.	
-1037	ST936701FC	SCOTTS VALLEY, CA 95066-4544	
-1073	ST973401FC		

**RELEASED
FOR PUBLICATION**



SIZE	CAGE CODE	DWG NO.	REV
A	14028	642245	A
			SHEET 5